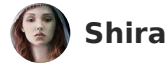


## Prosthetic Hand



Shira

VIEW IN BROWSER

updated 12. 4. 2022 | published 27. 11. 2019

### Summary

Prothestic Hand Remix: <http://www.thingiverse.com/thing:1095104> In this video explains the process.

[Gadgets](#) > [Other Gadgets](#)

Tags: [hand](#) [prosthetic](#)

#### Prothestic Hand

Remix: <http://www.thingiverse.com/thing:1095104>

In this video explains the process. Enables subtitles

This prosthesis has been designed to help those people with missing fingers.

It has been modelled keeping in mind the following principles:

- Keep the number of printed parts as low as possible.
- Keep the assembly process as simple as possible.
- Use the least possible amount of non-printable parts. In this new model, you can choose how to join fingers, using screws (2M), axes wire, or filament printer.

- Leave openings in the model to allow the hand to transpire.
- The previous model had another hand rotation system on the wrist,

had more freedom. On this occasion I have modified the movement of the wrist using the fantastic idea of a union that uses hand "Flexy-hand" <http://www.thingiverse.com/thing:380665>

-I have also modified the system of tensioning the strings. It is safer than before and takes up less space.

The fingers flex when they are pulled by strings, such as fishing line, and extend automatically with the help of elastic cord. A fabric strap with velcro is needed to secure the prosthesis to the arm.

You can download the original file blender, and thus can be studied and modified to improve its performance. I hope to be successful with modifications. Thank you very much to " <http://www.africadirecto.org/> " for suggesting changes and help to improve the model

## Print instructions Category: Hand Tools Print Settings

**Rafts:** No

**Supports:** No

**Resolution:** 0.2 mm

### Notes:

-Dixtal pieces: printed flexible filament "filaflex" - 80% filling

-Hand, Wrist and Proximal pieces: 20% filling

-links and cover pieces: 20% filling

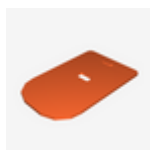
## Post-Printing

**Tutorial:** <http://www.instructables.com/id/Prothetic-Hand/>

## Model files



**middle\_proximal.stl**



**cover.stl**



**3\_proximal.stl**

---



**wrist\_left.stl**

---



**link\_1\_thumb.stl**

---



**3\_link.stl**

---



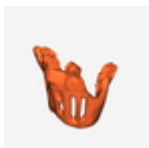
**palm\_hand\_right.stl**

---



**link\_1\_middle.stl**

---



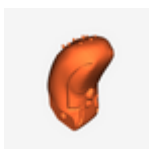
**palm\_hand\_left.stl**

---



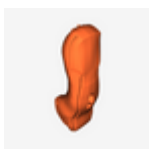
**palm\_hand\_without\_thumb\_right.stl**

---



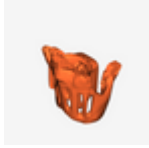
**thumb\_distal.stl**

---



**middle\_distal.stl**

---



**hand-and-whist.stl**

---



**flexible-filament.stl**

---



**prosthetic-hand-blender.blend**

---



**100-filling.stl**

---



**proximal.stl**

---



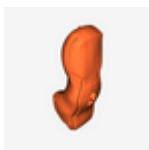
**thumb\_proximal.stl**

---



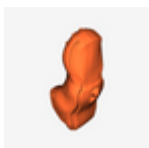
**wrist\_right.stl**

---



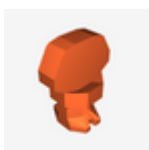
**3\_distal.stl**

---



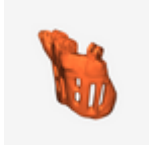
**pinkie\_distal.stl**

---



**5\_tensioning\_piece.stl**

---



**palm\_hand\_without\_thumb\_left.stl**



**joint.stl**

[Find source .stl files on Thingiverse.com](#)

## License

This work is licensed under a  
[Creative Commons \(4.0 International License\)](#)



**Attribution-ShareAlike**

- 
- ✘ | Sharing without ATTRIBUTION
  - ✓ | Remix Culture allowed
  - ✓ | Commercial Use
  - ✓ | Free Cultural Works
  - ✓ | Meets Open Definition